

Permit

Environmental Protection Act 1994

Environmental authority EPPR00777413

This amended environmental authority is issued by the administering authority under Chapter 5 of the Environmental Protection Act 1994. This amended environmental authority replaces previous environmental authority dated 16/02/17.

Environmental authority number: EPPR00777413

Environmental authority takes effect upon signing of the delegate

Environmental authority holder

Name	Registered address
Sunshine Coast Regional Council	Cnr Currie and Bury Street, Nambour QLD 4560

Environmentally relevant activity and location details

Environmentally relevant activity/activities	Locations
16-(2b) Extractive >100000t but < 1000000t yr	Dulong Quarry, Sherwell & Dulong School Road, Dulong QLD 4560 Lot 3 Plan RP199680, Lot 1 Plan RP163034 and Lot 1023 Plan CG3239
16-(2b) Extractive > 100000t but <1000000t yr 16-(3c) Screening > 1000000t yr	Image Flat Quarry Image Flat Road, Nambour QLD 4560 Lot 858 Plan CG4800, Lot 11 Plan CP883883, Lot 14 Plan SP110907, Part Lot 368 Plan FTY1901, Lot 861 Plan CG4801, Lot 3 Plan RP154740 and Lot 50 Plan CP883883
6 Asphalt Manufacturing >1000t yr	Image Flat Quarry Image Flat Road, Nambour QLD 4560 Lot 3 Plan RP154740

Additional information for applicants

Environmentally relevant activities

The description of any environmentally relevant activity (ERA) for which an environmental authority (EA) is issued is a restatement of the ERA as defined by legislation at the time the EA is issued. Where there is any

inconsistency between that description of an ERA and the conditions stated by an EA as to the scale, intensity or manner of carrying out an ERA, the conditions prevail to the extent of the inconsistency.

An EA authorises the carrying out of an ERA and does not authorise any environmental harm unless a condition stated by the EA specifically authorises environmental harm.

A person carrying out an ERA must also be a registered suitable operator under the *Environmental Protection Act 1994* (EP Act).

Contaminated land

It is a requirement of the EP Act that an owner or occupier of contaminated land give written notice to the administering authority if they become aware of the following:

- the happening of an event involving a hazardous contaminant on the contaminated land (notice must be given within 24 hours); or
- a change in the condition of the contaminated land (notice must be given within 24 hours); or
- a notifiable activity (as defined in Schedule 3) having been carried out, or is being carried out, on the contaminated land (notice must be given within 20 business days)

that is causing, or is reasonably likely to cause, serious or material environmental harm.

For further information, including the form for giving written notice, refer to the Queensland Government website www.qld.gov.au, using the search term 'duty to notify'.

Take effect


Please note that, in accordance with section 200 of the EP Act, an EA has effect:

- a) if the authority is for a prescribed ERA and it states that it takes effect on the day nominated by the holder of the authority in a written notice given to the administering authority on the nominated day; or
- b) if the authority states a day or an event for it to take effect on the stated day or when the stated event happens; or
- c) otherwise- one the day the authority is issued.

However, if the EA is authorising an activity that requires an additional authorisation (a relevant tenure for a resource activity, a development permit under the *Planning Act 2016* or an SDA Approval under the *State Development and Public Works Organisation Act 1971*), this EA will not take effect until the additional authorisation has taken effect.

If this EA takes effect when the additional authorisation takes effect, you must provide the administering authority written notice within 5 business days of receiving notification of the related additional authorisation taking effect.

If you have incorrectly claimed that an additional authorisation is not required, carrying out the ERA without the additional authorisation is not legal and could result in your prosecution for providing false or misleading information or operating without a valid environmental authority.



Signature

Rebecca Griffiths
Department of Environment and Science
Delegate of the administering authority
Environmental Protection Act 1994

14/12/18

Date

Enquiries:

Department of Environment and Science
GPO Box 2454
BRISBANE QLD 4001
Phone: 1300 130 372
Email: palm@des.qld.gov.au

Obligations under the *Environmental Protection Act 1994*

In addition to the requirements found in the conditions of this environmental authority, the holder must also meet their obligations under the EP Act, and the regulations made under the EP Act. For example, the holder must comply with the following provisions of the Act:

- general environmental duty (section 319)
- duty to notify environmental harm (section 320-320G)
- offence of causing serious or material environmental harm (sections 437-439)
- offence of causing environmental nuisance (section 440)
- offence of depositing prescribed water contaminants in waters and related matters (section 440ZG)
- offence to place contaminant where environmental harm or nuisance may be caused (section 443)

Conditions of environmental authority

Part 1 General Conditions

Environmentally relevant activities	Locations
16-(2b) Extractive >100000t but < 1000000t yr	Dulong Quarry, Sherwell & Dulong School Road, Dulong QLD 4560 Lot 3 Plan RP199680, Lot 1 Plan RP163034 and Lot 1023 Plan CG3239
16-(2b) Extractive > 100000t but <1000000t yr 16-(3c) Screening > 1000000t yr	Image Flat Quarry Image Flat Road, Nambour QLD 4560 Lot 858 Plan CG4800, Lot 11 Plan CP883883, Lot 14 Plan SP110907, Part Lot 368 Plan FTY1901, Lot 861 Plan CG4801, Lot 3 Plan RP154740 and Lot 50 Plan CP883883
6 Asphalt Manufacturing >1000t yr	Image Flat Quarry Image Flat Road, Nambour QLD 4560 Lot 3 Plan RP154740

The environmentally relevant activities conducted at the location as described above must be conducted in accordance with the following site specific conditions of approval.

Agency interest: General	
Condition number	Condition
G1.1	All reasonable and practicable measures must be taken to minimise the likelihood of environmental harm being caused.
G1.2	Any breach of a condition of this environmental authority must be reported to the administering authority as soon as practicable, or at most, within 24 hours of you becoming aware of the breach. Records must be kept including full details of the breach and any subsequent actions undertaken.

G1.3	Environmental monitoring results must be kept until surrender of this environmental authority. All other information and records that are required by the conditions of this environmental authority must be kept for a minimum of five (5) years. All information and records required by the conditions of this environmental authority must be provided to the administering authority , or nominated delegate upon request, within the required timeframe and in the specified format.
G1.4	The activity must be undertaken in accordance with written procedures that: 1. identify potential risks to the environment from the activity during routine operations, closure and an emergency 2. establish and maintain control measures that minimise the potential for environmental harm 3. ensure plant, equipment and measures are maintained in a proper and effective condition 4. ensure plant, equipment and measures are operated in a proper and effective manner 5. ensure that staff are trained and aware of their obligations under the <i>Environmental Protection Act 1994</i> 6. ensure that reviews of environmental performance are undertaken at least annually.
G1.5	Any visible light released from the approved place must not, in the opinion of an authorised person, cause an environmental nuisance at or beyond the boundary of the approved place .
G1.6	You must record the following details for all environmental complaints received: a) date and time complaint was received b) name and contact details of the complainant c) nature of the complaint d) investigations undertaken e) conclusions formed f) actions taken.
G1.7	When required by the administering authority , monitoring must be undertaken in the manner prescribed by the administering authority , to investigate a complaint of environmental nuisance arising from the activity . The monitoring results must be provided to the administering authority , or nominated delegate , within the required timeframe and in the specified format upon request.
Agency interest: Air	
Condition number	Condition
A1.1	Odours or airborne contaminants which are noxious or offensive or otherwise unreasonably disruptive to public amenity or safety must not cause nuisance to any sensitive place or commercial place .
Agency interest: Water	
Condition number	Condition
WT1.1	Contaminants must not be released to any waters .
WT1.2	Stormwater runoff from disturbed areas of the site, generated by (up to and including) a 24 hour storm event with an average recurrence interval of 1 in 5 years must be retained on site or managed to remove contaminants prior to release.

WT1.3

The only **contaminants** to be released to surface **waters** are settled treated stormwater runoff waters in accordance with Table WT1.3 – *Water quality criteria* and the associated monitoring requirements.

Table WT1.3 – Water Quality Release Criteria

Quality Characteristics (Units)	Limits	Limits Type	Minimum Monitoring Frequency	Monitoring Point
Turbidity	50NTU	Maximum	Prior to Discharge and daily during discharge	Image Flat Quarry - SB1 - SB2 - PM1 Dulong Quarry - DM1
pH	6.5 to 8.5	Range	Prior to discharge and daily during discharge	Image Flat Quarry - SB1 - SB2 - PM1 Dulong Quarry - DM1
Dissolved Al, Total Cu, Ni, Pb, Zn	N/A	N/A	Quarterly	Image Flat Quarry - SB1 - SB2 - PM1 - Upstream and downstream of release point Dulong Quarry - DM1 - Upstream and downstream of release point
Total Mn	N/A	N/A	Quarterly	Dulong Quarry - DM1 - Upstream and downstream of release point

Associated monitoring requirements

1. Release points must be in accordance with Schedule 1, Figure 1 – *Image Flat Quarry – Water Monitoring Locations Plan* and Schedule 1, Figure 2 – *Dulong Quarry – Water Monitoring Locations Plan*.
2. Monitoring to be conducted only at the discharge monitoring locations relevant to the release event.
3. Monitoring must be in accordance with the methods prescribed in the current edition of the Department of Environmental and Science *Water Quality Sampling Manual*.
4. Samples must be taken using representative samples.
5. All determinations must employ analytical practical quantification limits sufficiently low enough to enable comparisons to be made against water quality objectives/ limits relevant to the particular water quality characteristic.
6. Monitoring must be undertaken during a release as per the frequency stated.
7. All monitoring devices must be correctly calibrated and maintained.

WT1.4

Monitoring of **contaminant** releases to **waters** must be undertaken in accordance with condition WT1.3 and records of the results must be kept.

WT1.5	In addition to WT1.3, the release to waters must not: <ol style="list-style-type: none"> 1. Have any other properties at a concentration that is capable of causing environmental harm; 2. Produce any slick or other visible evidence of oil or grease, nor contain visible floating oil, grease, scum, litter or other visually objectionable matter.
Agency interest: Land	
Condition number	Condition
L1.1	Contaminants must not be released to land .
Agency interest: Noise	
Condition number	Condition
N1.1	Noise generated by the activity must not cause environmental nuisance to any sensitive place or commercial place .

N1.2

The emission of noise from the licensed place must not result in levels greater than those specified in Table N1.2a – *Noise limits*.

Table N1.2a – Noise limits

Noise limits at noise sensitive place	
Time periods	Noise level at noise sensitive place measured as the adjusted maximum sound pressure level $L_{max\ adj, T}$
Monday to Friday 7am-6pm Saturday 7am-12 noon	Background noise level plus 5 dB(A)
Monday to Saturday 6am-7am Monday to Friday 6pm-10pm Saturday 12 noon-6pm	Background noise level plus 5 dB(A)
All other times and public holiday	Background noise level
Noise limits at a commercial place	
Time periods	Noise level at a commercial place measured as the adjusted maximum sound pressure level $L_{max\ adj, T}$
Monday to Friday 7am-6pm Saturday 7am-12 noon	Background noise level plus 10dB(A)
Monday to Saturday 6am-7am Monday to Friday 6pm-10pm Saturday 12 noon-6pm	Background noise level plus 10 dB(A)
All other times and public holidays	Background noise level plus 5dB(A)

The value of **background noise level** to be used in conjunction with the noise limits in Table 1.2a – Noise limits above is to be obtained from Table 1.2b below using the following methodology.

- i. If the measured **background noise level** is above the upper limit of the appropriate range, the upper limit of the appropriate range must be used.
- ii. If the measured **background noise level** is below the lower limit of the appropriate range, the lower limit of the appropriate range must be used.

If the measured **background noise level** is within the appropriate range, then the measured value must be used.

Table 1.2b

Time periods	Range of Background noise levels dB(A)
Monday to Friday 7am-6pm Saturday 7am-12 noon	40 - 50
Monday to Saturday 6am-7am Monday to Friday 6pm-10pm Saturday 12 noon-6pm	35 - 45
All other times and public holidays	30 - 40

N1.3

For the purposes of checking compliance with condition N1.2 of the noise schedule monitoring and recording the noise levels from the environmentally relevant **activity/activities** must be undertaken for at least the following descriptors, characteristics and conditions:

- i. $L_{A\ maxAdjT}$
- ii. L_{AbgT} (Or $L_{A90,T}$);
- iii. The level and frequency of occurrence of impulsive or tonal noise;
- iv. Atmospheric conditions including temperature, relative humidity and wind speed and direction; and
- v. Effects due to extraneous factors such as traffic noise.

N1.4

In conjunction with the measurement and recording of the noise, the following parameters and conditions must be recorded:

- plant operating at the time of the measurements.

N1.5

The method of measurement and reporting of noise levels must comply with the Department of Environment and Science *Noise Measurement Manual*, second edition, March 1995, or more recent additions or supplements to that document as become available.

N1.6	Blasting must be carried out in accordance with the current edition of the administering authority's Noise and vibration from blasting guideline and with <i>Australian Standard 2187</i> .
N1.7	Unless prior approval is obtained from the administering authority : 1. blasting is only permitted during the hours of 9 am to 3 pm Monday to Friday, and from 9 am to 1 pm on Saturdays. 2. blasting is not permitted at any time on Sundays or public holidays.
Agency interest: Waste	
Condition number	Condition
WS1.1	All waste generated in carrying out the activity must be reused, recycled or removed to a facility that can lawfully accept the waste.

Part 2 Site Specific Conditions

Environmentally relevant activities	Locations
16-(2b) Extractive > 100000t but <1000000t yr 16-(3c) Screening >1000000t yr	Image Flat Quarry Image Flat Road, Nambour QLD 4560 Lot 858 Plan CG4800, Lot 11 Plan CP883883, Lot 14 Plan SP110907, Part Lot 368 Plan FTY1901, Lot 861 Plan CG4801, Lot 3 Plan RP154740 and Lot 50 Plan CP883883
6 Asphalt Manufacturing >1000t yr	Image Flat Quarry Image Flat Road, Nambour QLD 4560 Lot 3 Plan RP154740

The environmental relevant activities conducted at the location as described above must be conducted in accordance with the following site specific conditions of approval.

Agency interest: Air - Asphalt Plant												
Condition number	Condition											
A2.1	<p>Contaminants must only be released to the atmosphere from those release points specified in Table A2.1.</p> <p style="text-align: center;">Table A2.1</p> <table border="1" style="width: 100%; border-collapse: collapse;"> <thead> <tr> <th style="width: 20%;">Release point number</th> <th style="width: 30%;">Source description</th> <th style="width: 20%;">Minimum release height (metres)</th> <th style="width: 30%;">Minimum Efflux Velocity (metres/Second)</th> </tr> </thead> <tbody> <tr> <td style="text-align: center;">A1</td> <td style="text-align: center;">Asphalt plant chimney stack</td> <td style="text-align: center;">22 above ground level</td> <td style="text-align: center;">8</td> </tr> </tbody> </table>				Release point number	Source description	Minimum release height (metres)	Minimum Efflux Velocity (metres/Second)	A1	Asphalt plant chimney stack	22 above ground level	8
	Release point number	Source description	Minimum release height (metres)	Minimum Efflux Velocity (metres/Second)								
	A1	Asphalt plant chimney stack	22 above ground level	8								
A2.2	<p>Contaminants released from each release point specified in Table A2.1 of the air schedule must be directed vertically upwards without any impedence or hindrance.</p>											
A2.3	<p>Contaminants must be released to the atmosphere from a release point at a height not less than the corresponding height stated for that release point in Table A2.1.</p>											
A2.4	<p>Contaminants must be released to the atmosphere from a release point at a velocity not less than the corresponding velocity stated for that release point in Table A2.1.</p>											
A2.5	<p>Contaminants must not be released to the atmosphere from a release point at a mass emission rate in excess of that stated in Table A2.5.</p> <p style="text-align: center;">Table A2.5</p> <table border="1" style="width: 100%; border-collapse: collapse;"> <thead> <tr> <th style="width: 20%;">Release point number</th> <th style="width: 30%;">Contaminant</th> <th style="width: 20%;">Release limit</th> <th style="width: 30%;">Release limit unit</th> </tr> </thead> <tbody> <tr> <td style="text-align: center;">A1</td> <td style="text-align: center;">Particulates</td> <td style="text-align: center;">250</td> <td style="text-align: center;">mg/m³</td> </tr> </tbody> </table> <p>Associated Requirements: A1 is described as the Asphalt plant chimney stack.</p>				Release point number	Contaminant	Release limit	Release limit unit	A1	Particulates	250	mg/m ³
	Release point number	Contaminant	Release limit	Release limit unit								
	A1	Particulates	250	mg/m ³								
A2.6	<p>Contaminants must not be released to the atmosphere from a release point at a concentration in excess of that stated in Table A2.5.</p>											
A2.7	<p>All contaminants leaving the asphalt plant fly ash silo must be treated in a fabric filter dust collector (FFDC).</p>											

A2.8	<p>The holder of this environmental authority must conduct a monitoring program of contaminant releases to the atmosphere at the release points, frequency, and for the parameters specified in Table A2.8 and which complies with the following:</p> <ul style="list-style-type: none"> a) All determinations must be made by a person or body registered by the National Association of Testing Authorities (NATA) for the required determinations, b) Monitoring provisions at the release points listed in Table A2.8 must comply with the Australian Standard AS 4323.1 - 1995 "Stationary source emissions Method 1: Selection of sampling provisions". c) The following tests must be performed for each required determination specified in Table A2.1: <ul style="list-style-type: none"> i. gas velocity and volume flow rate ii. temperature iii. water vapour concentration d) Where practicable samples taken must be representative of the contaminants discharged when emissions are expected to be normal, e) During the sampling period the following additional information must be gathered, <p style="text-align: center;">Table A2.8 - Required Release Point Determinations</p> <table border="1" style="margin-left: auto; margin-right: auto;"> <thead> <tr> <th>Release point number</th> <th>Determination required</th> <th>Frequency</th> </tr> </thead> <tbody> <tr> <td style="text-align: center;">A1</td> <td style="text-align: center;">Particulates</td> <td style="text-align: center;">Annually</td> </tr> </tbody> </table> <p>Associated Requirements: A1 is described as the Asphalt plant chimney stack.</p>	Release point number	Determination required	Frequency	A1	Particulates	Annually
Release point number	Determination required	Frequency					
A1	Particulates	Annually					
A2.9	Sampling must be performed at the following locations: nearest affected residences.						
A2.10	Analysis of the obtained samples must be made for the following: <ul style="list-style-type: none"> i. total water insoluble dust in milligrams; and ii. dust fallout in milligrams/square metre/day. 						
A2.11	The samples must be collected and analysed in accordance with the requirements of <i>Australian Standard AS 3580.10.1 Methods for sampling and analysis of ambient air: Determination of particulate matter—Deposited matter—Gravimetric method.</i>						
Agency interest: Blasting							
Condition number	Condition						
N2.1	<p>Blasting activities must not exceed the limits for peak particle velocity and air blast overpressure in Table N2.1 — <i>Blasting limits</i> when measured at any sensitive place or commercial place in accordance with the associated monitoring requirements.</p> <p style="text-align: center;">Table N2.1 — Blasting noise limits</p> <table border="1" style="margin-left: auto; margin-right: auto;"> <thead> <tr> <th>Blasting Criteria</th> <th>Blasting Limits</th> </tr> </thead> <tbody> <tr> <td>Airblast overpressure</td> <td>115 dB (Linear peak) for 9 out of 10 consecutive blasts.</td> </tr> <tr> <td>Ground vibration peak particle velocity</td> <td>5mm/s peak particle velocity of 9 out 10 consecutive blasts and not greater than 10mm/s particle velocity at any time.</td> </tr> </tbody> </table>	Blasting Criteria	Blasting Limits	Airblast overpressure	115 dB (Linear peak) for 9 out of 10 consecutive blasts.	Ground vibration peak particle velocity	5mm/s peak particle velocity of 9 out 10 consecutive blasts and not greater than 10mm/s particle velocity at any time.
Blasting Criteria	Blasting Limits						
Airblast overpressure	115 dB (Linear peak) for 9 out of 10 consecutive blasts.						
Ground vibration peak particle velocity	5mm/s peak particle velocity of 9 out 10 consecutive blasts and not greater than 10mm/s particle velocity at any time.						

Part 3 Site Specific Conditions

Environmentally relevant activities	Locations
16-(2b) Extractive >100000t but < 1000000t yr	Dulong Quarry, Sherwell & Dulong School Road, Dulong QLD 4560 Lot 3 Plan RP199680, Lot 1 Plan RP163034 and Lot 1023 Plan CG3239

The environmental relevant activities conducted at the location as described above must be conducted in accordance with the following site specific conditions of approval.

Agency interest: Blasting							
Condition number	Condition						
N3.1	<p>Blasting activities must not exceed the limits for peak particle velocity and air blast overpressure in Table N3.1 — <i>Blasting limits</i> when measured at any sensitive place or commercial place in accordance with the associated monitoring requirements.</p> <p style="text-align: center;">Table N3.1—Blasting limits</p> <table border="1" style="width: 100%; border-collapse: collapse;"> <thead> <tr> <th style="text-align: center;">Blasting Criteria</th> <th style="text-align: center;">Blasting Limits</th> </tr> </thead> <tbody> <tr> <td style="vertical-align: top;">Airblast overpressure</td> <td>120 dB (linear peak) for 9 out of 10 consecutive blast initiated. Maximum 2 blasts per year permitted.</td> </tr> <tr> <td style="vertical-align: top;">Ground vibration peak particle velocity</td> <td>5mm/s peak particle velocity of 9 out 10 consecutive blasts and not greater than 10mm/s particle velocity at any time.</td> </tr> </tbody> </table>	Blasting Criteria	Blasting Limits	Airblast overpressure	120 dB (linear peak) for 9 out of 10 consecutive blast initiated. Maximum 2 blasts per year permitted.	Ground vibration peak particle velocity	5mm/s peak particle velocity of 9 out 10 consecutive blasts and not greater than 10mm/s particle velocity at any time.
Blasting Criteria	Blasting Limits						
Airblast overpressure	120 dB (linear peak) for 9 out of 10 consecutive blast initiated. Maximum 2 blasts per year permitted.						
Ground vibration peak particle velocity	5mm/s peak particle velocity of 9 out 10 consecutive blasts and not greater than 10mm/s particle velocity at any time.						

Definitions

Key terms and/or phrases used in this document are defined in this section. Where a term is not defined, the definition in the *Environmental Protection Act 1994*, its regulations or environmental protection policies must be used. If a word remains undefined it has its ordinary meaning.

Key terms and/or phrases used in this document are defined in this section and **bolded** throughout this document. Applicants should note that where a term is not defined, the definition in the *Environmental Protection Act 1994*, its regulations or environmental protection policies must be used. If a word remains undefined it has its ordinary meaning.

Activity means the environmentally relevant activities, whether resource activities or prescribed activities, to which the environmental authority relates.

Administering authority means the Department of Environment and Science or its successor or predecessors.

Approved places(s) means the place (s) authorised under this environmental authority for the carrying out of the specified environmentally relevant activities.

Airblast overpressure is the energy transmitted from the blast site within the atmosphere in the form of pressure waves. As these waves pass a given position, the pressure of the air rises very rapidly then falls more slowly then returns to the ambient value after a number of oscillations. The pressure wave consists of both audible (noise) and inaudible (concussion) energy. The **maximum** excess pressure in this wave is known as the peak air overpressure, generally measured in decibels using the linear frequency-weighting.

Background noise level means either:

$L_{A90, T}$ being the A-weighted sound pressure level exceeded for 90 percent of the time period not less than 15 minutes, using Fast response, or $L_{A_{bg}, T}$ being the arithmetic average of the minimum readings measured in the absence of the noise under investigation during a representative time period of not less than 15 minutes, using Fast response.

Blasting is the use of explosives to fracture:

- rock, coal and other minerals for later recovery; or
- structural components or other items to facilitate removal from a site or for reuse.

Contaminant means anything mentioned in (a) to (c) below, released (whether by act or omission) into the environmental

- (a) A gas, liquid or solid; or
- (b) An odour; or
- (c) An organism (whether alive or dead), including a virus; or
- (d) Energy, including noise, heat, radioactivity and electromagnetic radiation; or
- (e) A combination of contaminants.

Commercial place means a place used as a workplace, an office or for business or commercial purposes and includes a place within the curtilage of such a place reasonably used by persons at that place.

Environmental nuisance as defined in Chapter 1 of the *Environmental Protection Act 1994*.

$L_{A_{max\ adj}, T}$ means the average **maximum** A – weighted sound pressure level, adjusted for noise character and measured over a time period of not less than 15 minutes, using Fast response.

Land means land excluding waters and the atmosphere.

Maximum means that the measured value of the quality characteristics or contaminant must not be greater than the release limit stated.

mg/L means milligrams per litre.

Measures has the broadest interpretation and includes:

- **Procedural measures** such as standard operating procedures for dredging operations, environmental risk assessment, management actions, departmental direction and competency expectations under relevant guidelines
- **Physical measures** such as plant, equipment, physical objects (such as bunding, containment systems etc.), ecosystem monitoring and bathymetric surveys.

Nominated delegate means another government agency that provides services to the administering authority.

Noxious means harmful or injurious to health or physical well-being.

NATA means National Association of Testing Authorities.

Offensive means causing offence or displeasure; is unreasonably disagreeable to the senses; disgusting, nauseous or repulsive.

Sensitive place includes the following and includes a place within the curtilage of such a place reasonably used by persons at that place:

1. a dwelling, residential allotment, mobile home or caravan park, residential marina or other residential premises; or
2. a motel, hotel or hostel; or
3. a kindergarten, school, university or other educational institution; or
4. a medical centre or hospital; or
5. a protected area under the *Nature Conservation Act 1992*, the *Marine Parks Act 2004* or a World Heritage Area; or
6. a public park or garden; or
7. for noise, a place defined as a sensitive receptor for the purposes of the Environmental Protection (Noise) Policy 2008.

Vibration is the oscillating or periodic motion of a particle, group of particles, or solid object about its equilibrium position.

Waters include rivers, stream, lake, lagoon, pond, swamp, wetland, unconfined surface water, unconfined water natural or artificial watercourse, bed and bank of any waters, dams, non- tidal or tidal waters (including the sea), stormwater channel, stormwater drain, roadside gutter, stormwater run-off and groundwater and any part thereof.

You means the holder of the environmental authority.

24 hour storm event with an average recurrence interval of 1 in 5 years means the **maximum** rainfall depth from a 24 hour duration precipitation event with an average recurrence interval of once in 5 years. *For example, an Intensity-Frequency-Duration table for a 24 hour duration event with an average recurrence interval of 1 in 5 years, identifies a rainfall intensity of 7.09mm/hour. The rainfall depth for this event is therefore 24 hour x 7.09mm/hour = 170.16mm.*

Schedule 1

Figure 1 – Image Flat Quarry – Water Monitoring Locations Plan

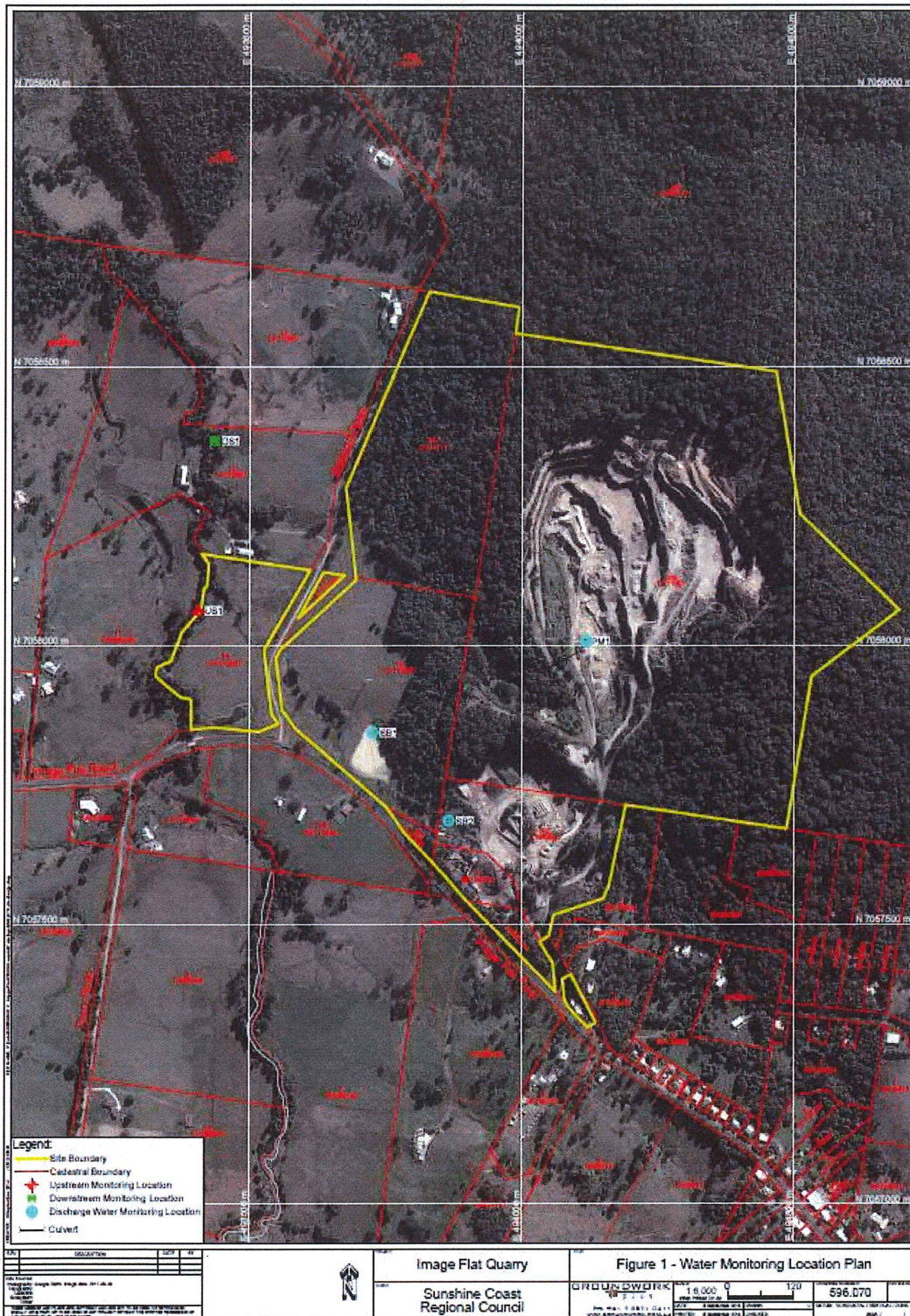
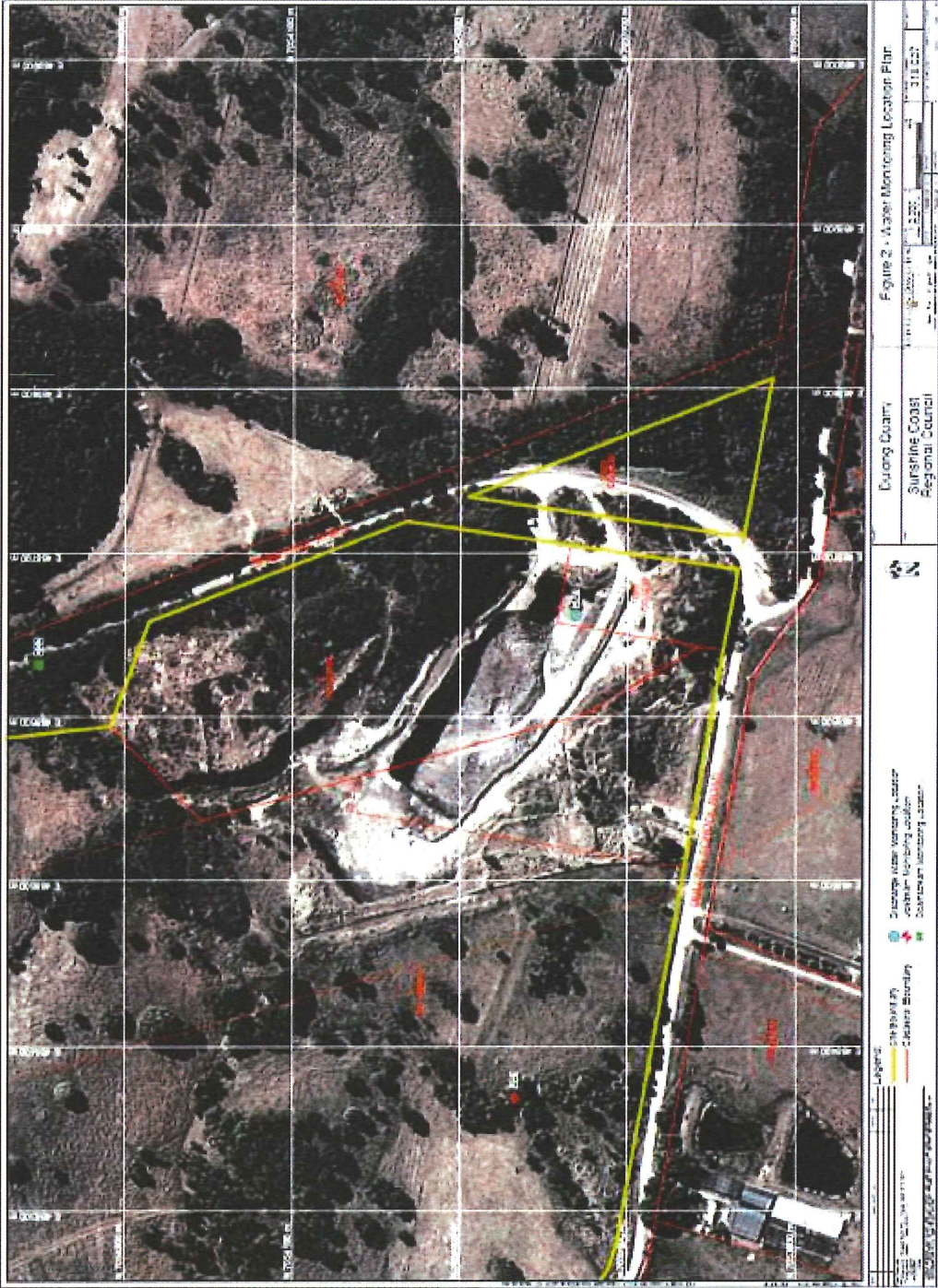


Figure 2 – Dulong Quarry – Water Monitoring Locations Plan



END OF PERMIT